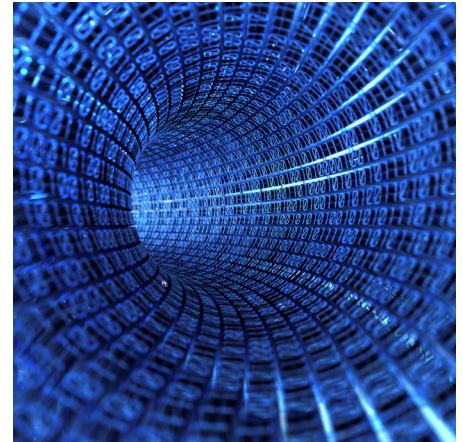


# Best Practice

**Service:** Consulting  
**Solution Suite:** Project Management  
**Best Practice:** Technology Needs/Gap Analysis



## Overview

AMS has a wide range of experience with Project Management (PM) software solutions. Our team of consultants stays up to date with the leading industry providers to ensure they are able to identify, evaluate and recommend the application that works best in the client environment. .

AMS does not support or re-sell any software programs as we have determined it would be a conflict of interest to our consulting practice.

As we build enterprise solutions for clients ranging from project life cycles to PM best practice process and methodologies we identify the necessary functionality that a “technology support” system will need to represent.

Once we establish a functional specification, align internal/external technology guidelines and generate both a process and technical gap analysis we will work on our client’s behalf as a liaison with procurement and the selected vendor to ensure efficient integration and deployment.

The implementation stage of the process is driven by the AMS project engagement methodology and renders a time efficient and value based implementation plan to ensure that the cost of consultation is offset by long term dollar savings.

AMS is your non-bias team member focusing on providing prudent recommendations that will shorten and add value to the decision making process.

Our team leverages a standardized matrix that correlates needs, wants and functionality to produce a clear picture for the foundation of any functional specification. The output of the evaluation process also takes into consideration the competency profile within the organization, project complexity and cultural norms to ensure appropriate change strategy issues are addressed. Finally, a complete and comprehensive evaluation of training needs both from a technical perspective as well as competency base will be set in motion to ensure end user readiness.

Please contact an AMS Business Development Manager for more information. [Contact Us>](#)